

901 Series Cart Corral

Cart Corrals ensure the safety and simplicity of gathering your carts while decreasing damage to customers' vehicles from stray carts. The 900 Series Cart Corral is specifically designed to fit up to three rows of carts. Strategically place our corrals throughout your parking lot to reduce the labor costs of cart retrieval and enhance the shopping experience of your customers.

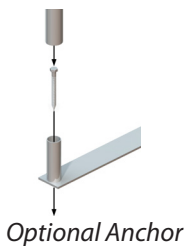
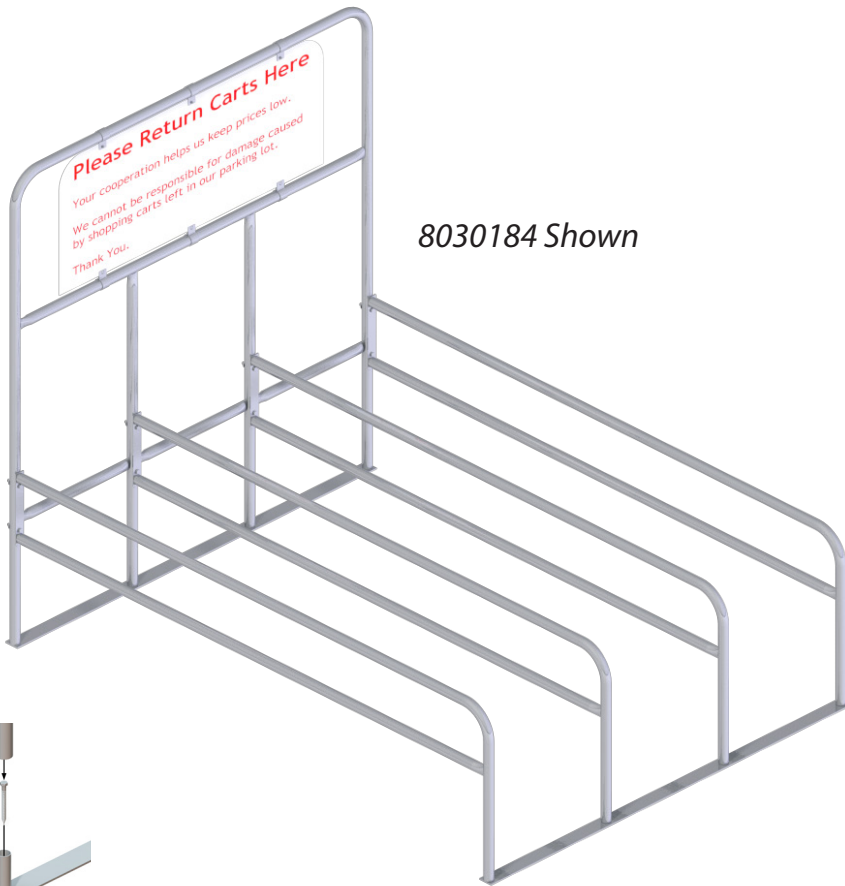
FEATURES:

- Heavy gauge flow coat galvanized mechanical steel tubing provides superior durability
- Interior corrosion resistant coating
- Hot dipped, galvanized bar base plates
- 18-gauge galvanized steel signs with durable powder coated finish and silk screen printing
- Easily assembled and can be anchored for maximum stability

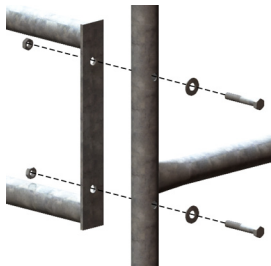
OPTIONS:

- Side rail Length: 10 ft., 14 ft.
- Single Entry or Double Entry
- Anchors
- Powder coat finish available (Inquire with your customer service representative)
- Standard Sign: #3030288
Size 27" x 66" Text Style: 0597B
- Upgraded sign with disclaimer #3030181
Size 27" x 66" Text Style: 1424
- Custom Signage Available

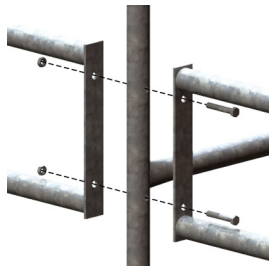
8030184 Shown



Optional Anchor



Single Entry Assembly

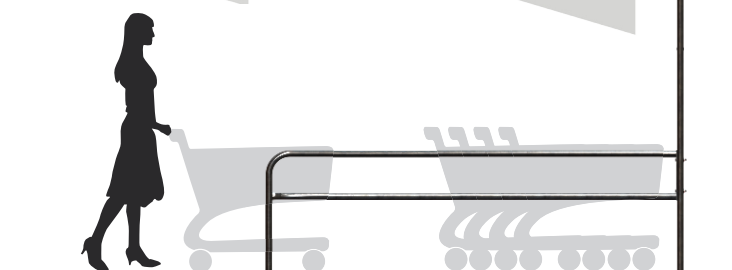


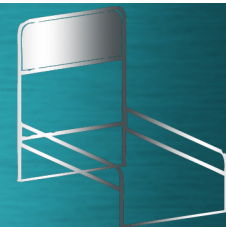
Double Entry Assembly

3030288
standard sign



3030181
upgraded sign

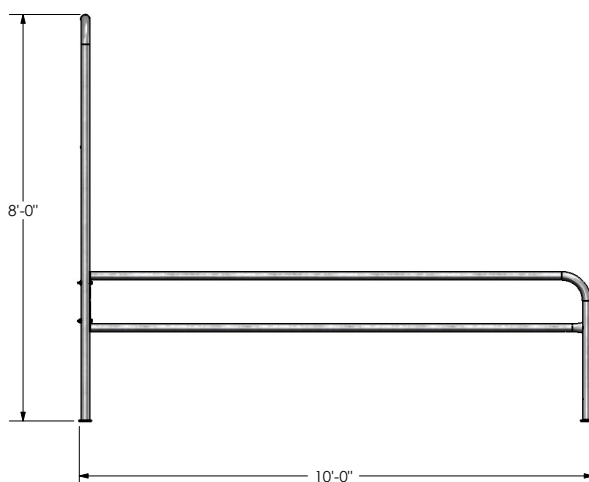
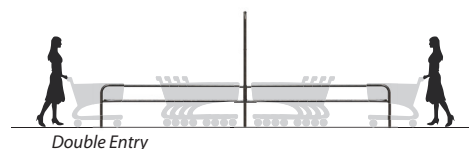
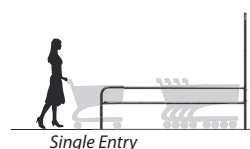
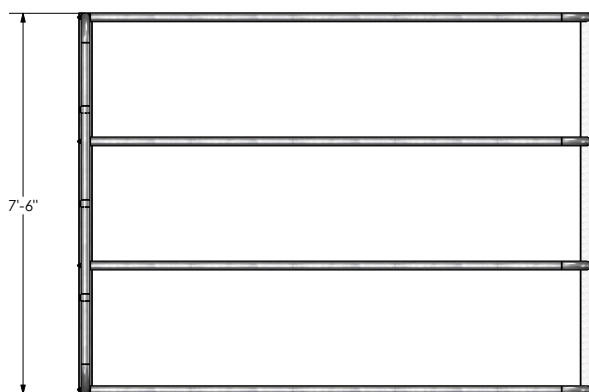




Cart Corrals

8030184 Shown

Freight Class: 250
NMFC Code: 164390-S3



Cart Corral Order #	Model	W	L	H	Entry	Weight
8030184	CC-901-10 7.5Wx10Lx8H 27s SECLGP	7.5'	10'	8'	Single	334 lbs.
8030185	CC-901-14 7.5Wx14Lx8H 27s SECLGP	7.5'	14'	8'	Single	412 lbs.
8030187	CC-901-20 7.5Wx20Lx8H 27s DECLGP	7.5'	20'	8'	Double	551 lbs.
8030188	CC-901-28 7.5Wx28Lx8H 27s DECLGP	7.5'	28'	8'	Double	696 lbs.
B000108	5" Lag Bolt Anchor	-	-	-	-	-

One sign per cart corral is included. Please indicate the sign order number when placing your order. To customize your sign, please contact your customer service representative. Other sign features are available on our sign page!

Sign Order #	Model	H	W
3030181	CCS-2766-1424 WHITE BG/RED PRINT	27"	66"
3030288	CCS-2766-0597B, WHT BKG/RED PRNT	27"	66"



NATIONAL CART CO

Can't find exactly what you need? Give us a call and we'll help you with the perfect solution!

PH: 800-455-3802

www.nationalcart.com

Revision Date: Mar. 2013