

# 721 Series Cart Corral

Cart Corrals ensure the safety and simplicity of gathering your carts while decreasing damage to customers' vehicles from stray carts. Strategically place our corrals throughout your parking lot to reduce the labor costs of cart retrieval and enhance the shopping experience of your customers.

## FEATURES:

- Heavy gauge flow coat galvanized mechanical steel tubing provides superior durability
- Interior corrosion resistant coating
- Hot dipped, galvanized bar base plates
- 18-gauge galvanized steel signs with durable powder coated finish and silk screen printing
- Easily assembled and can be anchored for maximum stability

## OPTIONS:

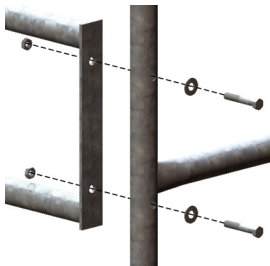
- Side rail Length: 10 ft., 14 ft.
- Single Entry or Double Entry
- Anchors
- Powder coat finish available (Inquire with your customer service representative)
- Standard Sign: #3030288  
Size 27" x 66" Text Style: 0597B
- Upgraded sign with disclaimer #3030181  
Size 27" x 66" Text Style: 1424
- Custom Signage Available



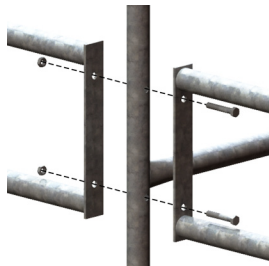
8030172 Shown



Optional Anchor

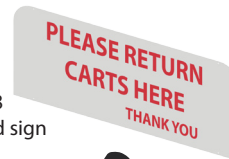


Single Entry Assembly



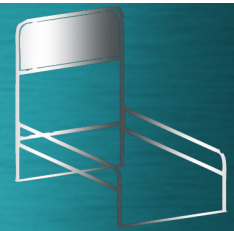
Double Entry Assembly

3030288  
standard sign



3030181  
upgraded sign

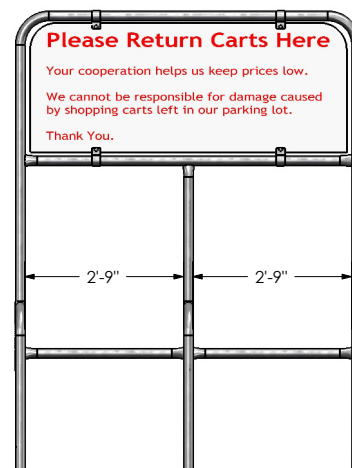
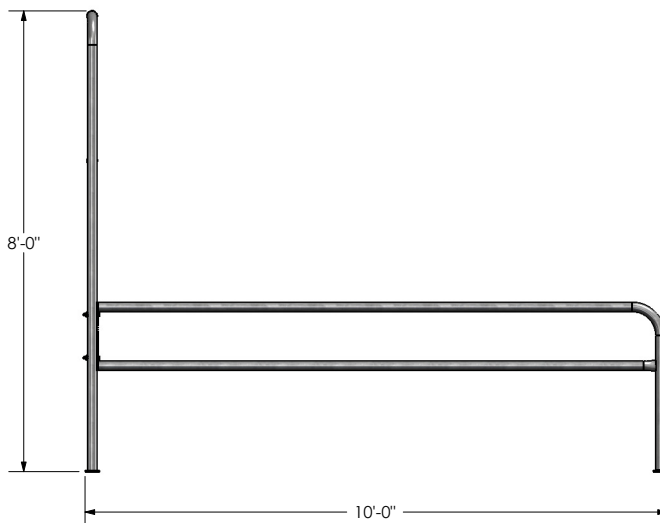
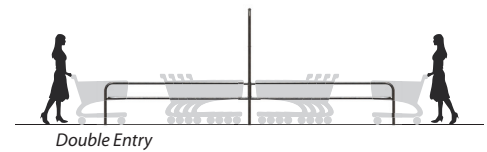
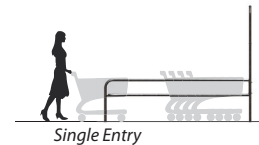
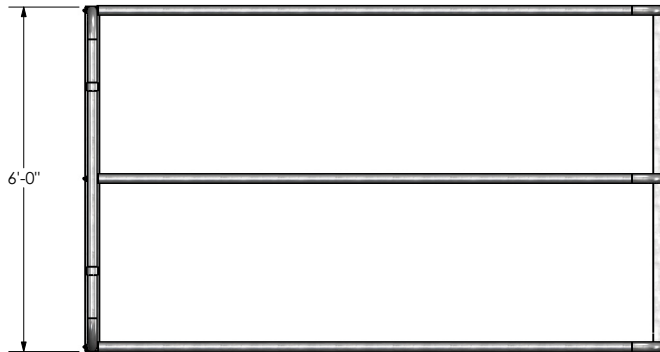




**Cart Corrals**

8030172 Shown

Freight Class: 250  
NMFC Code: 164390-S3



Cart Corral Order #	Model	W	L	H	Entry	Weight
<b>8030172</b>	CC-721-10 6Wx10Lx8H 27s SECLGP	6'	10'	8'	Single	266 lbs.
<b>8030173</b>	CC-721-14 6Wx14Lx8H 27s SECLGP	6'	14'	8'	Single	335 lbs.
<b>8030175</b>	CC-721-20 6Wx20Lx8H 27s DECLGP	6'	20'	8'	Double	411 lbs.
<b>8030176</b>	CC-721-28 6Wx28Lx8H 27s DECLGP	6'	28'	8'	Double	549 lbs.
<b>B000108</b>	5" Lag Bolt	-	-	-	-	-

One sign per cart corral is included. Please indicate the sign order number when placing your order. To customize your sign, please contact your customer service representative. Other sign features are available on our sign page!

Sign Order #	Model	H	W
<b>3030181</b>	CCS-2766-1424 WHITE BG/RED PRINT	27"	66"
<b>3030288</b>	CCS-2766-0597B, WHT BKG/RED PRNT	27"	66"

Can't find exactly what you need? Give us a call and we'll help you with the perfect solution!



**NATIONAL CART CO**

**PH: 800-455-3802**

**www.nationalcart.com**

Revision Date: Mar. 2013