

# 603 Series Cart Corral

Cart Corrals ensure the safety and simplicity of gathering your carts while decreasing damage to customers' vehicles from stray carts. Strategically place our corrals throughout your parking lot to reduce the labor costs of cart retrieval and enhance the shopping experience of your customers.



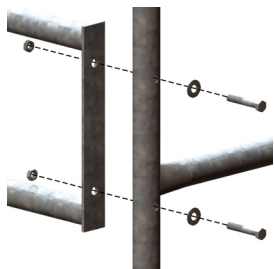
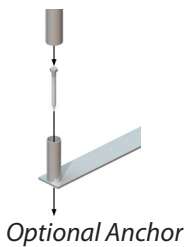
8030160 Shown

### FEATURES:

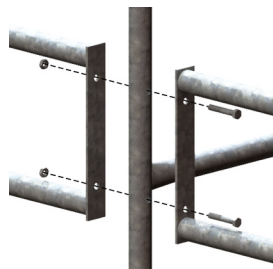
- Heavy gauge flow coat galvanized mechanical steel tubing provides superior durability
- Interior corrosion resistant coating
- Hot dipped, galvanized bar base plates
- 18-gauge galvanized steel signs with durable powder coated finish and silk screen printing
- Easily assembled and can be anchored for maximum stability

### OPTIONS:

- Side rail Length: 10 ft., 14 ft.
- Single Entry or Double Entry
- Anchors
- Powder coat finish available (Inquire with your customer service representative)
- Standard Sign: #3030059  
Size 24" x 48" Text Style: 0597B
- Upgraded sign with disclaimer #3030067  
Size 24" x 48" Text Style: 1424
- Custom Signage Available)



Single Entry Assembly

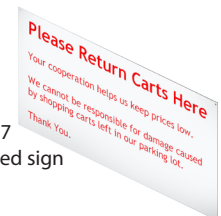


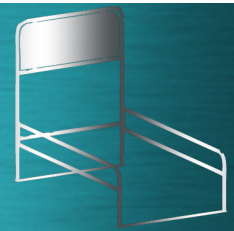
Double Entry Assembly

3030059  
standard sign



3030067  
upgraded sign

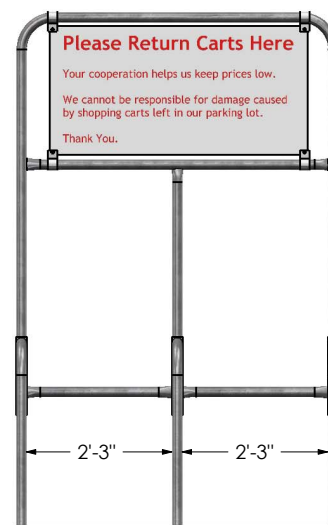
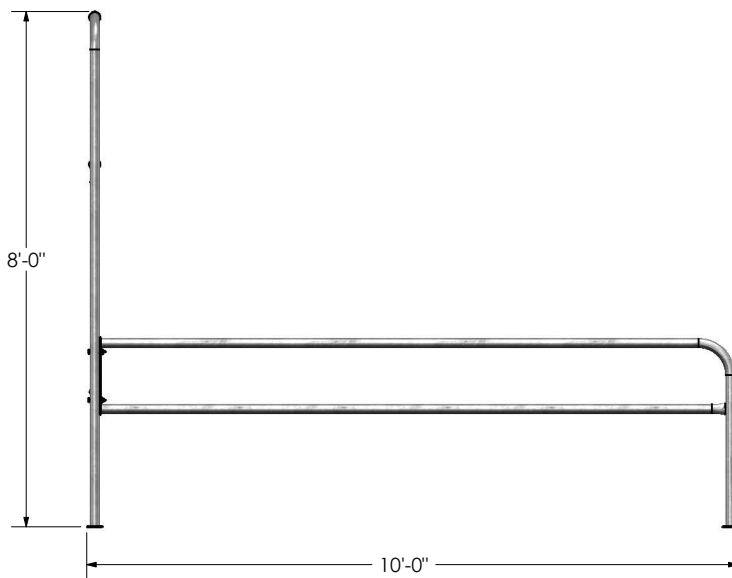
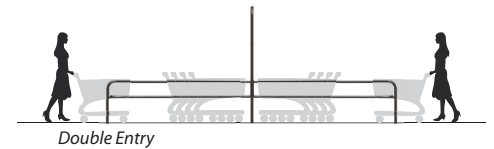
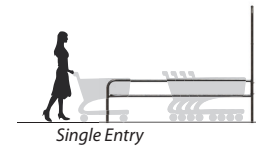
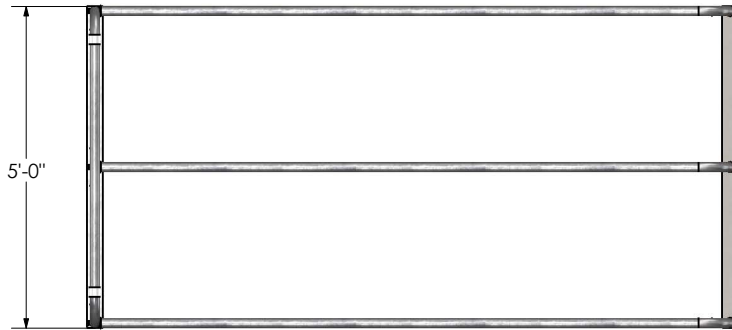




# Cart Corrals

8030160 Shown

Freight Class: 250  
NMFC Code: 164390-S3



Cart Corral Order #	Model	W	L	H	Entry	Weight
<b>8030160</b>	CC-603-10 5Wx10Lx8H SECLGP	5'	10'	8'	Single	240 lbs.
<b>8030161</b>	CC-603-14 5Wx14Lx8H SECLGP	5'	14'	8'	Single	309 lbs.
<b>8030163</b>	CC-603-20 5Wx20Lx8H DECLGP	5'	20'	8'	Double	383 lbs.
<b>8030164</b>	CC-603-28 5Wx28Lx8H DECLGP	5'	28'	8'	Double	521 lbs.
<b>B000108</b>	5" Lag Bolt Anchor	-	-	-	-	-

One sign per cart corral is included. Please indicate the sign order number when placing your order. To customize your sign, please contact your customer service representative. Other sign features are available on our sign page!

Sign Order #	Model	H	W
<b>3030067</b>	CCS-2448-1424 SIGN RED/WHT	24"	48"
<b>3030059</b>	CCS-2448-0597B, WHT BKG/RED PRNT	24"	48"

Can't find exactly what you need? Give us a call and we'll help you with the perfect solution!



**NATIONAL CART CO**

**PH: 800-455-3802**

**www.nationalcart.com**

Revision Date: Mar. 2013