

# Bike Racks



Custom Colors Available

*This attractive bike rack can be placed anywhere to park bikes in selected areas. This fixture will minimize bikes being secured in customer traffic areas. Show your customers and associates that you support alternative modes of transportation and the environment.*

8010026



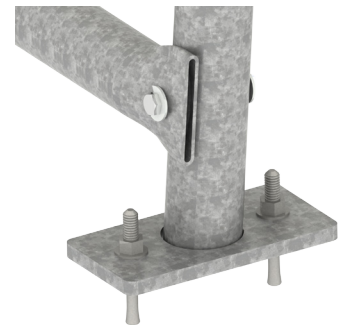
8010027



8010105



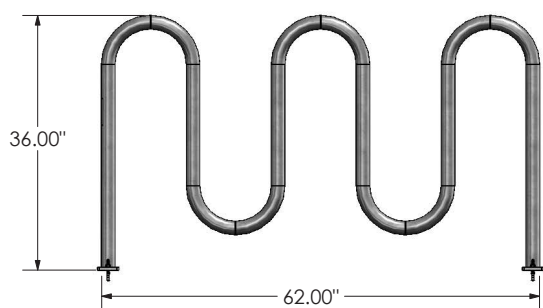
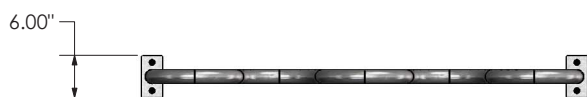
- FEATURES:**
- Constructed from heavy duty corrosive resistant galvanized tube
  - Offered in various sizes and in one and two way entry units
  - Feet provide a solid anchoring base
  - All Units ship knocked down for freight savings except 8010105 ships fully assembled
  - Easy assembly
  - Wedge anchors are included
  - Earth mount design available (inquire with your customer sales representative)



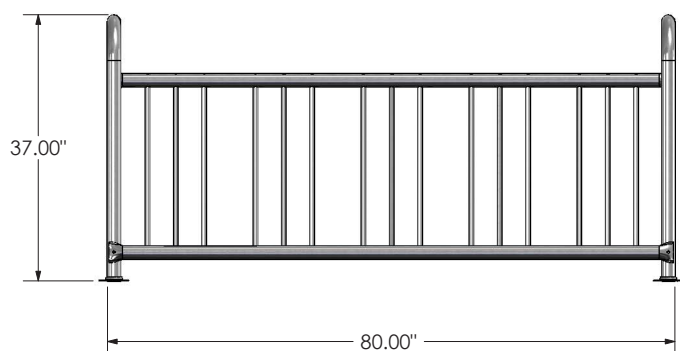


**Fixtures**

Freight Class: 250  
 NMFC Code: 164390-S3



8010105



8010026

Order #	Model	W	L	H	Weight
8010026	BR-105, 5 BIKES 1 WAY ENTRY	18"	80"	37"	79 lbs.
8010027	BR-210, 10 BIKES 2 WAY ENTRY	36"	80"	37"	103 lbs.
8010028	BR-110, 10 BIKES 1 WAY ENTRY	18"	176"	37"	139 lbs.
8010029	BR-220, 20 BIKES 2 WAY ENTRY	36"	176"	37"	163 lbs.
8010105	BR-1-7A, 7 BIKE CAPCITY, SERPENTINE	6"	62"	36"	46 lbs.

Can't find exactly what you need? Give us a call and we'll help you with the perfect solution!



**NATIONALCART CO**

**PH: 800-455-3802**

**www.nationalcart.com**

Revision Date: Mar. 2013